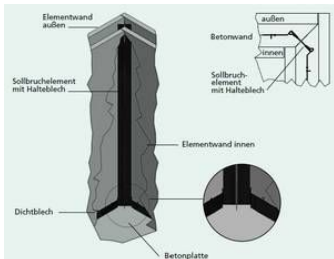
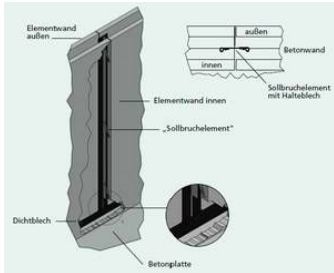
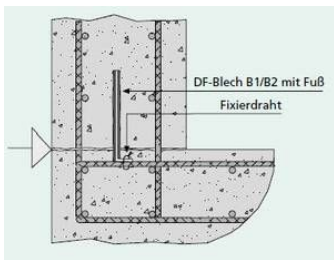
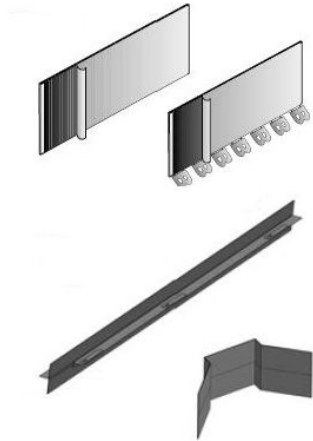


DF sheet B1-B2



DF metal waterstops are metal sheets with a special bituminous coating for sealing horizontal and vertical construction joints.

DF joint plate with retaining plate for vertical element wall joints.

DF joint plate with retaining plate for vertical corner element wall joints.

Applications, features, properties and benefits

Advantages:

Full-surface bituminous special coating

Safe and quick sealing of all construction joints with continuous reinforcement

No complex concrete upstands necessary

DF sheet metal B1/B2 with foot (B-shaped as a 90° contact angle) for high stability and easy tying

Minimum embedment depth of the metal sheet in concrete ≥ 3 cm

Sheet metal joints are secured by means of butt clamps

Minimum overlap of sheet metal joints ≥ 10 cm

No corner pieces required as the sheets can be bent and adjusted without tools

Two-piece siliconized film for optimal protection of the coating

DF sheet B1-B2

Article description	Title of variant	Packaging piece/ metre/ metre by the metre/ bucket/ bag/ bundle/ box/ can	Weight kg/metre	Weight kg/piece
87401150	DF sheet B1 (coated on one side) 150 x 2000 mm	100m/box	0,980	
87402150	* DF sheet B2 (coated on both sides) . 150 x 2000 mm	100m/box	1,150	
87402250	* DF sheet B2 roll (coated on both sides) . 20 m	20m / roll		0,880
87600011	Fixation bracket	100 pieces		0,082
87600020	Shock clamp	100 pieces		0,007
44390162	Spring cotter pin D=4mm galvanised . DIN 11024 (as butt clip)	1 pieces		0,016
87401160	DF sheet B1 with foot (coated on one side) 150 x 2000 mm	1 piece	1	
87402160	* DF sheet B2 with foot (coated on both sides) 150 x 2000 mm	100m/box	1,250	
87402180	DF nominal crack element B2 straight . element length 2,50 meter	linear metre	1,540	
87402202	DF corner element B2	1 piece		0,450